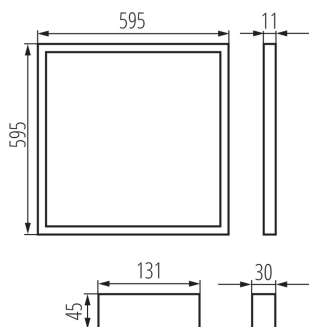


## 32620 BRASO LED 28W 6060 NW

Recessed-mounted LED panel

5905339326201



Kanlux BRASO LED panels are characterized by very high lighting effectiveness (130 lm/W). Moreover, high quality of the fitting allows prolonging the warranty to 5 years. A power supply unit is in the packaging along with the panel.

### GENERAL DATA:

**Colour:** white

**Place of assembly:** Recessed mount in the ceiling

**Place of application:** Indoors

**Minimum distance from the illuminated object:** 0,5m

**Compatible with a dimmer:** no

**Replaceable light source:** no

**The product is not suitable to be covered with a heat-insulating material:** yes

**Feeder included:** yes

**Length [mm]:** 595

**Width [mm]:** 595

**Height [mm]:** 11

**Integrated LED light source:** yes

### TECHNICAL DATA:

**Rated voltage [V]:** 220-240 AC

**Rated frequency [Hz]:** 50

**Maximum power [W]:** 28

**Class of protection against electric shock:** II

**Lampshade material:** plastic

**Diode type:** LED SMD

**Luminous flux [lm]:** 3600

**Colour temperature:** white

**Colour temperature [K]:** 4000

**Colour uniformity [SDCM]:** ≤6

**Colour-rendering index Ra:** ≥80

**Service life [h]:** 25000

**Number of on/off cycles:** ≥25000

**Lighting angle [°]:** 110

**Luminous efficiency of the lamp [lm/W]:** 129

**Ambient temperature range to which the product can be exposed:** 5÷35

**Enclosure material:** steel

**Panel/frame material:** aluminum alloy

**Connection type:** Terminal block

**Range of sections of wires used [mm<sup>2</sup>]:** 0,75-1

**The fixture set includes built-in LED's with the following energy classes:** A++,A+,A

**Lamp-heating time [s]:** ≤1

## 32620 BRASO LED 28W 6060 NW

Recessed-mounted LED panel



**Lamp-ignition time [s]:**  $\leq 0,5$

**IP class:** 40/20

### LOGISTIC DATA:

**Unit of measurement:** unit

**Packaging method:** 5

**Number of units in the secondary packaging:** 1

**Number of units in the packaging:** 5

**Net unit weight [g]:** 2616

**Grammage [g]:** 3260

**Length of a unit pack [cm]:** 63

**Width of a unit pack [cm]:** 2.5

**Height of a unit pack [cm]:** 63.5

**Weight of a cardboard box [kg]:** 16.3

**Width of a cardboard box [cm]:** 23

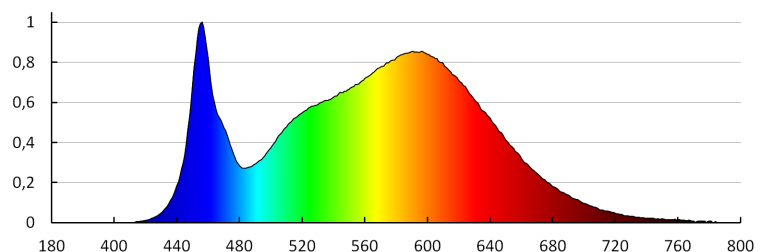
**Height of a cardboard box [cm]:** 66

**Length of a cardboard box [cm]:** 65

**Volume of a cardboard box [m<sup>3</sup>]:** 0.09867

### ADDITIONAL INFORMATION:

- 5 years Warranty under the terms of the warranty statement, available on our website



KANLUX S.A. (kat 32620) BRASO LED 28W 6060 / LDC (Polar)

Luminaire: KANLUX S.A. (kat 32620) BRASO LED 28W 6060  
Lamps: 1 x BRASO LED 28W 6060

